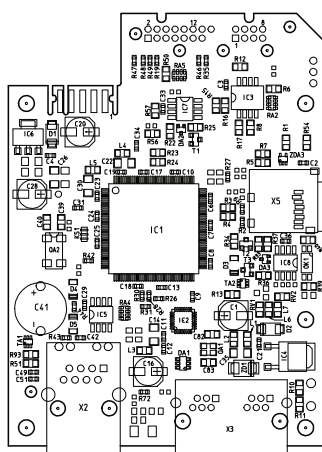




Installer reference guide

Daikin Boiler LAN Adapter



DRGATEWAYAA

Installer reference guide
Daikin Boiler LAN Adapter

English

Table of Contents

1	About the documentation	2
1.1	About this document.....	2
2	About the product	2
2.1	System requirements	3
3	To unpack the unit	3
4	Preparation	3
4.1	Overview of electrical connectors	3
4.2	Mounting the LAN Adapter to the boiler.....	4
4.3	Connecting the electrical wiring	7
5.	Configuration	8
5.1	Overview.....	8
5.2	Updating firmware	9
5.3	Factory reset	9
5.4	Removal of LAN adapter.....	9
6.	Troubleshooting	9
6.1	LED indication.....	9
6.2	Router	9
6.3	Error codes.....	9

1 About the documentation

1.1 About this document

Target audience

Authorised installers

Documentation set

This document is part of a documentation set. The complete set consists of:

Installation flyer:

- Content: Installation instructions
- Format: Paper (supplied in the kit)

Installer reference guide:

- Content: Installation instructions, configuration, application guidelines,...
- Format: Digital files on <http://www.daikineurope.com/support-and-manuals/product-information/>

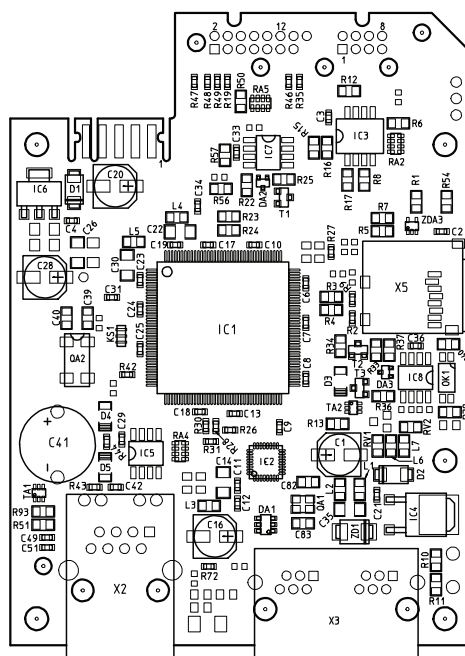
Latest revisions of the supplied documentation may be available on the regional Daikin website or via your dealer.

The original documentation is written in English. All other languages are translations.

2 About the product

The Daikin LAN adapter allows control of boilers via smartphone and tablet.

Components: PCB

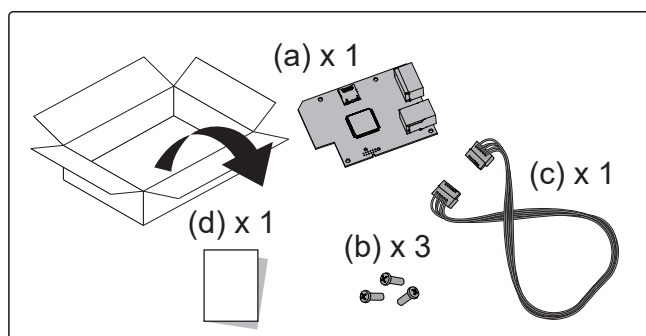


2.1 System requirements

Make sure your boiler is compatible for use with the LAN Adapter and that all system components meet software requirements. For more information, see webpage “ <http://www.daikin-europe.com/support-and-manuals/product-information/> ”.

3 To unpack the unit

Open the packing case. The following items must be included in the package:



a LAN adapter

b Screws to mount LAN Adapter

c LAN adapter – PCB connection cable

d Installation flyer

4 Preparation

The LAN Adapter is designed to be mounted in the PCB box of the boiler only, all the other use cases are considered as misuse.

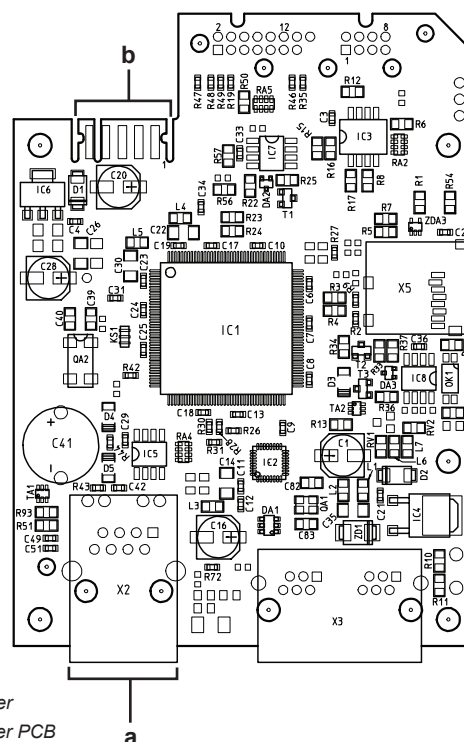


NOTICE

Risk of electrostatic discharge

Before mounting the PCB, touch an earthed part (a radiator, the casing of the indoor unit, ...) to eliminate static electricity and protect the PCB from damage. Only handle the PCB from its sides.

4.1 Overview of electrical connectors



a To router

b To boiler PCB

Connections

- To connect the LAN adapter to the router an ethernet cable with a maximum length of 50 m should be used.
- The cable should be Cat5e compliant. RJ45 8P8C connectors should be used.

1 General informations

4.2 Mounting the LAN Adapter to the boiler

The LAN adapter is mounted inside the PCB box of the boiler.
To mount the LAN Adapter, follow the steps shown below:

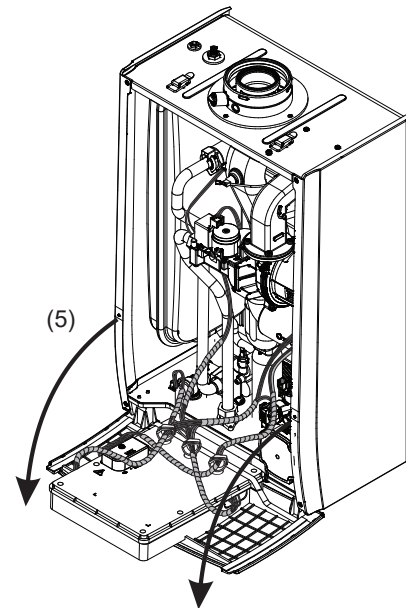
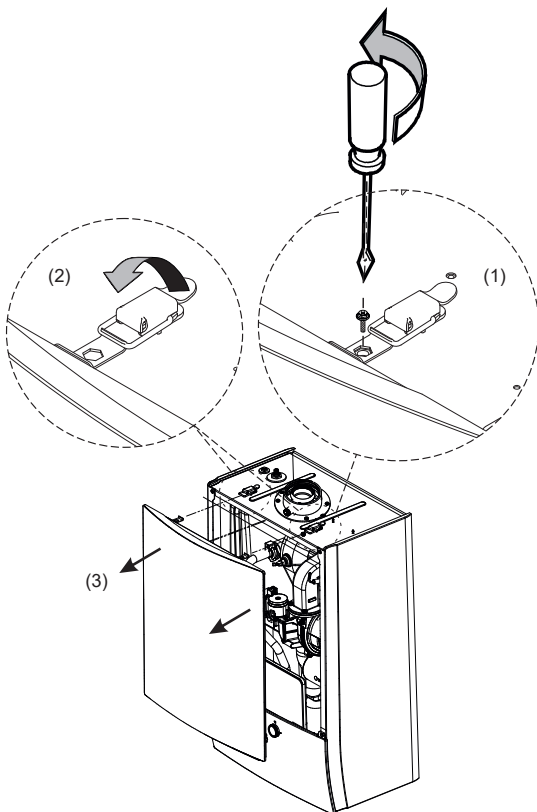


IMPORTANT

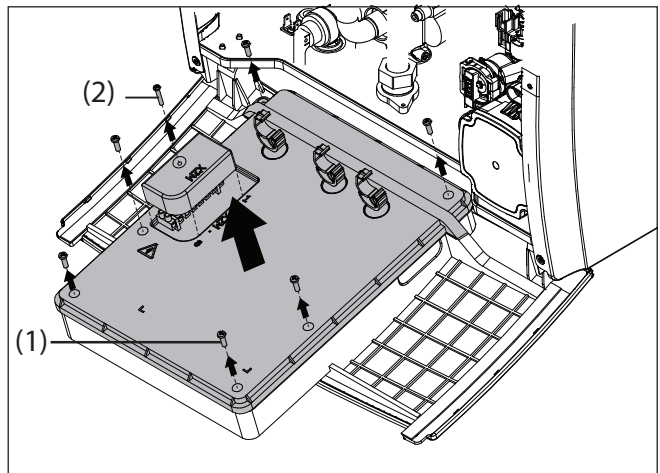
Make sure the unit is isolated from the power mains before executing below installation procedure !

a. For models D2xND028AxAA, D2xND035AxAA

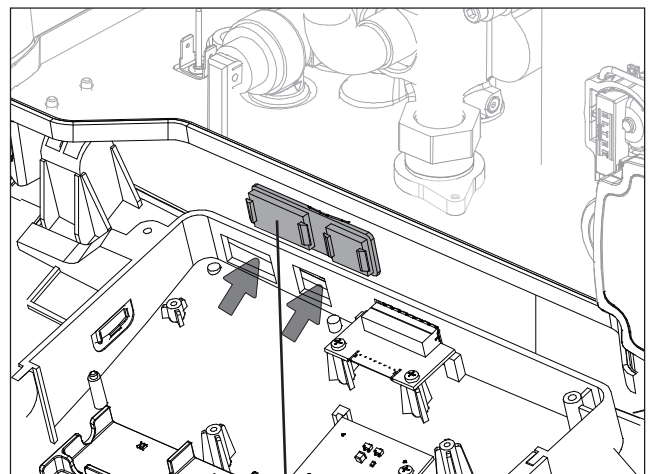
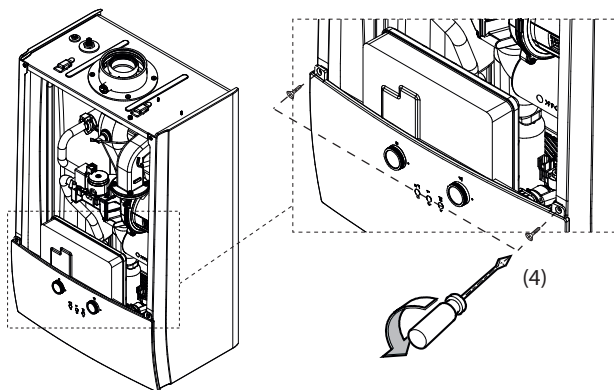
1. Open the appliance as shown below.



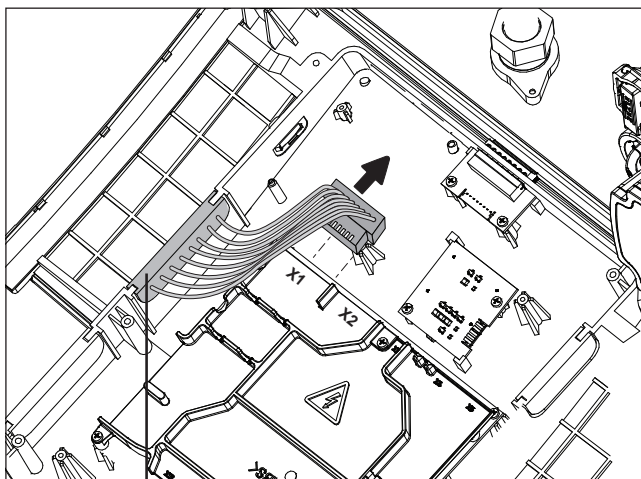
2. Loosen the 6 screws that hold control panel cover and 1 screw that holds X2M terminal cover. Remove the control panel cover as well as X2M terminal cover and X2M terminal.



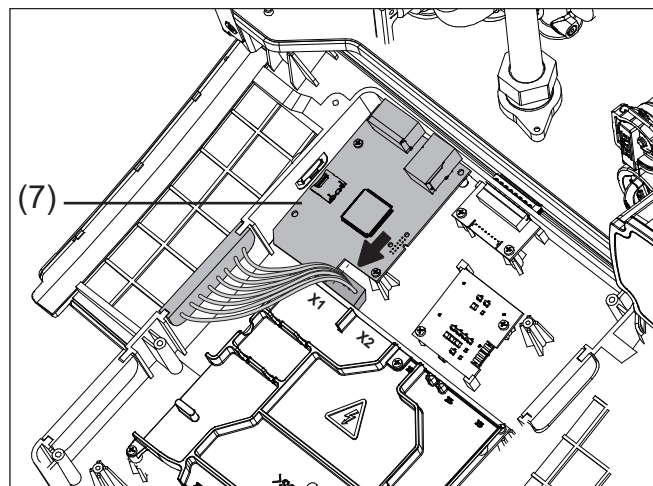
3. Remove the sealing plastic in order to free up the space for the LAN adapter connectors.



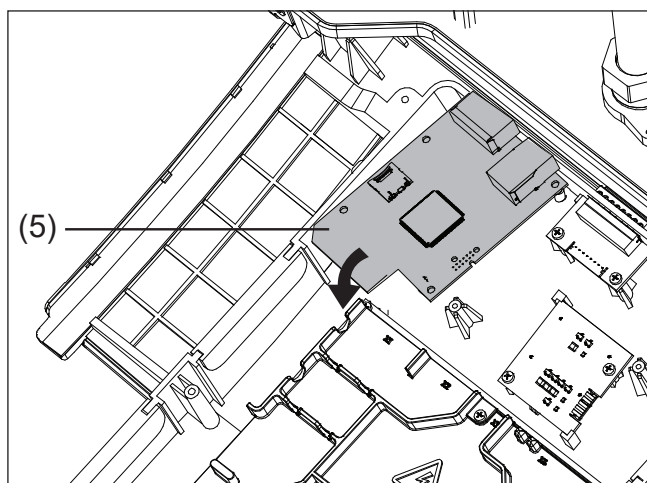
4. Remove the cable socket which is mounted to X1 terminal of the boiler PCB.



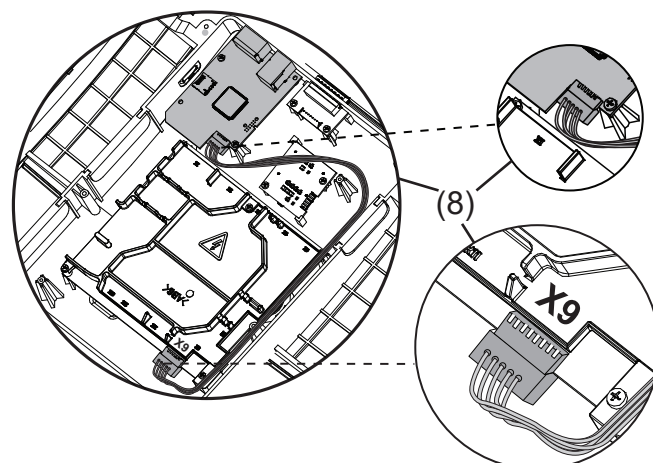
7. Plug the cable socket that was removed from X1 terminal of the boiler PCB.



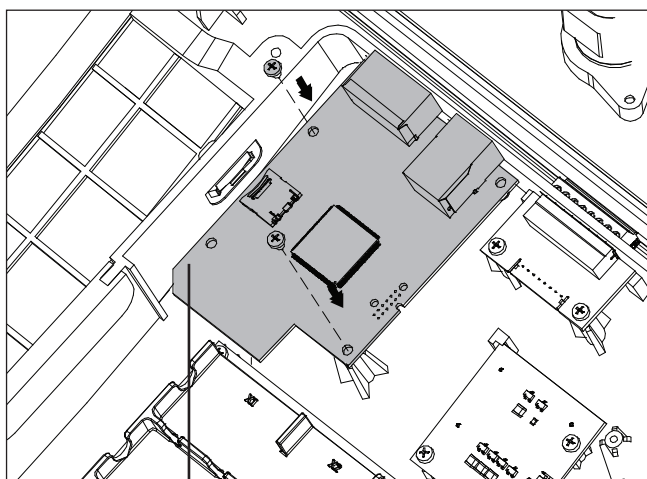
5. Place the LAN Adapter to its place. Please note that adapter is mounted crosswise.



8. Plug the LAN adapter cable to LAN Adapter and boiler PCB X9 terminal.



6. After placing the adapter, fix it to the PCB box panel with 2 screws.

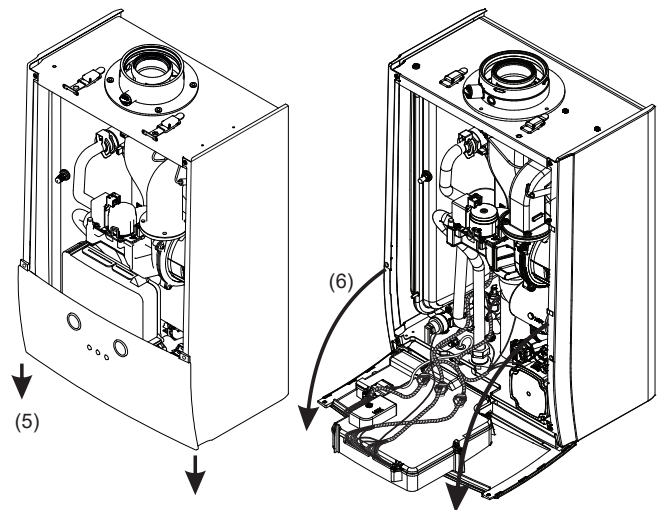
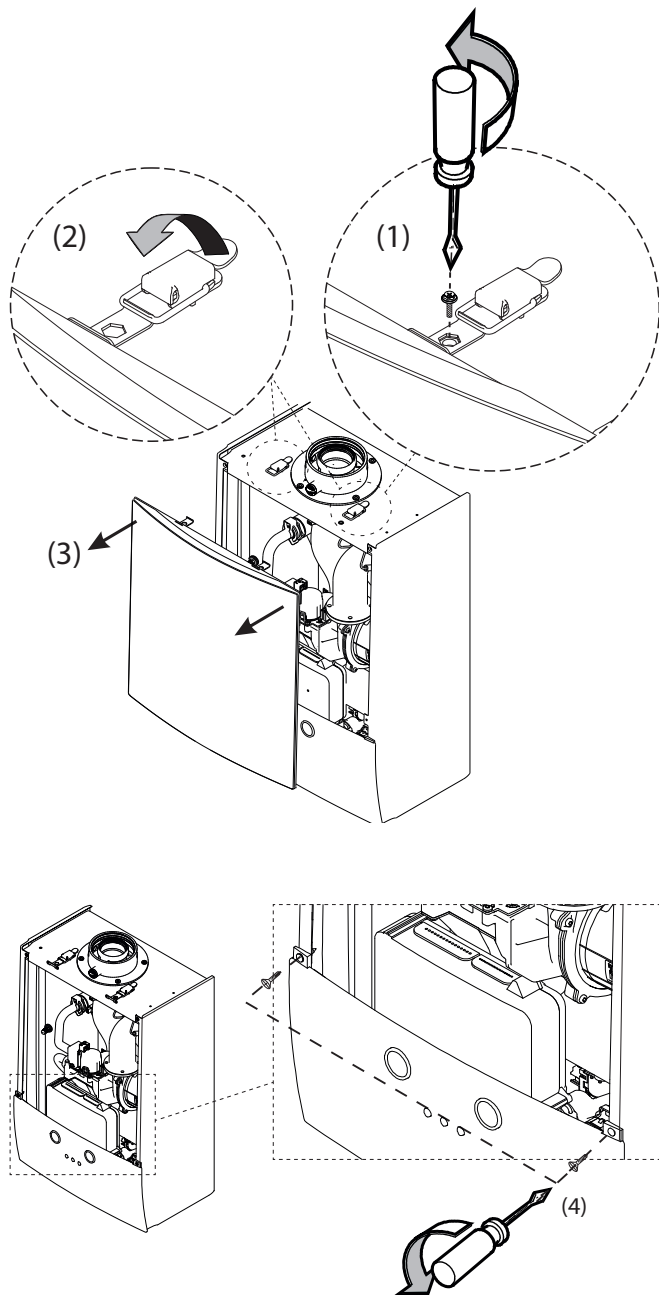


9. Close the control panel and the appliance following the instructions in reverse order.

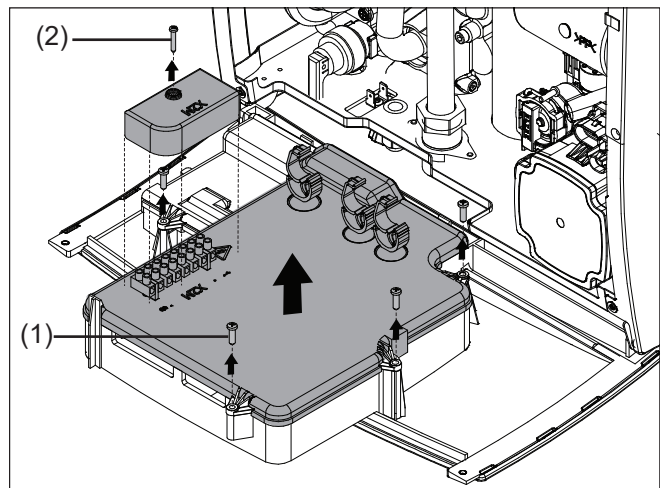
2 Appliance information

b. For models D2TND012A4AA, D2TND018A4AA, D2xN-D024AxAA

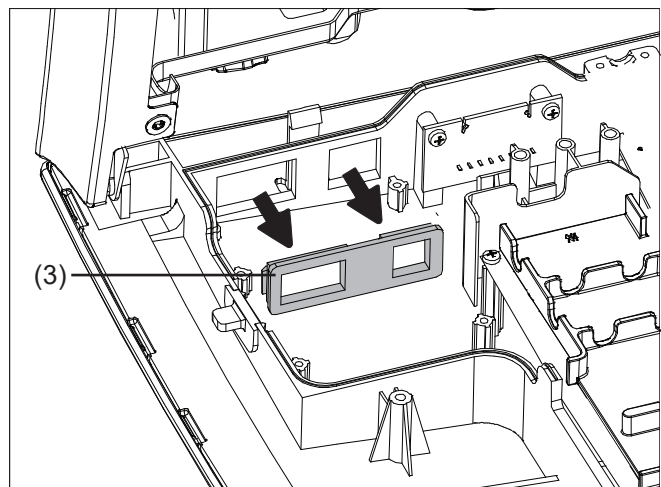
1. Open the appliance as shown below.



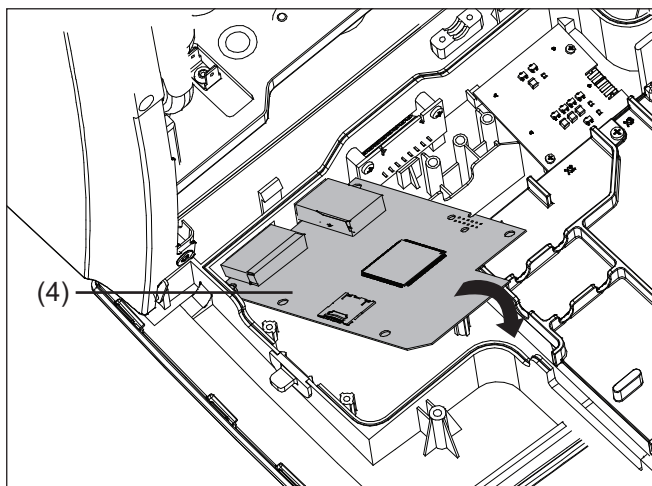
2. Loosen the 4 screws that hold the control panel cover and 1 screw that holds X2M terminal cover. Remove the control panel cover as well as X2M terminal cover and X2M terminal.



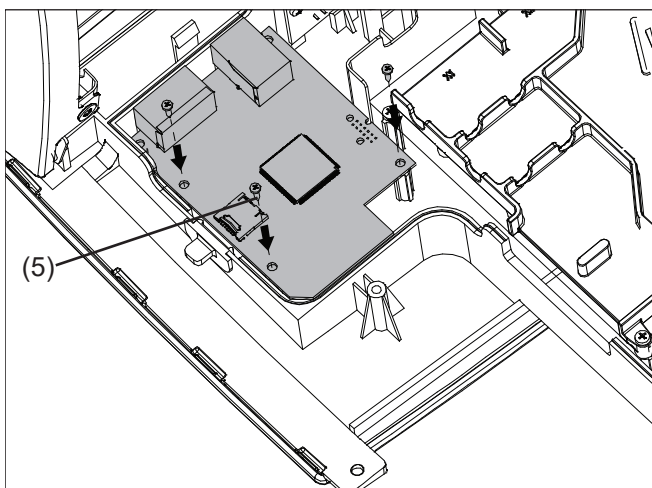
3. Remove the sealing plastic in order to free up the space for the LAN adapter connectors.



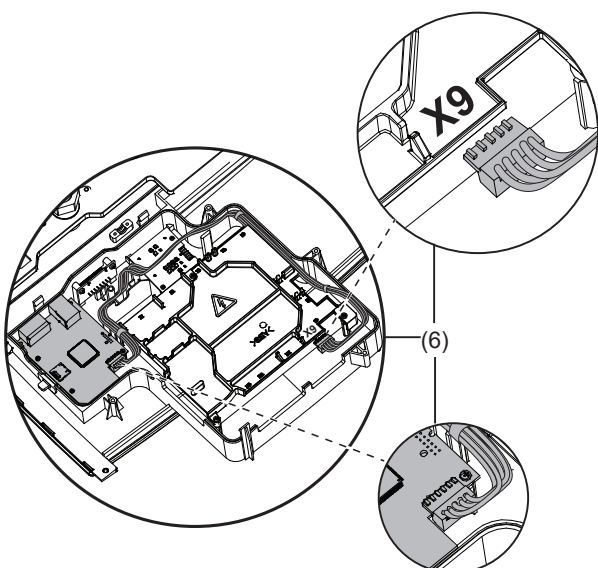
4. Mount the LAN adapter as shown below. Please note that adapter is mounted crosswise.



5. After placing the adapter, fix it to the control panel with 3 screws.



6. Plug the LAN adapter cable to LAN Adapter and Main PCB X9 terminal.



7. Close the control panel and the appliance following the instructions in reverse order.

4.3 Connecting the electrical wiring



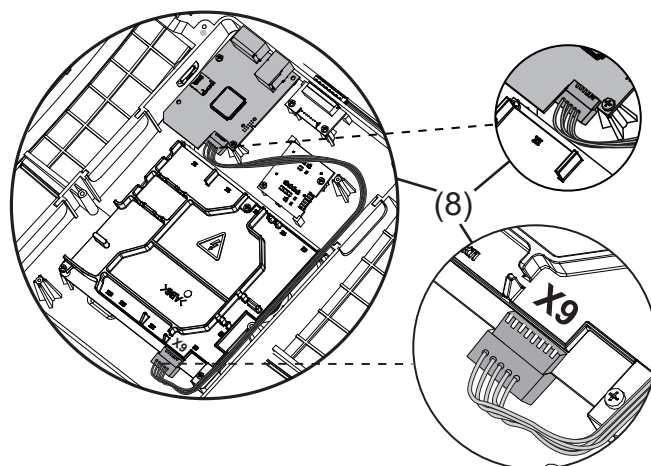
DANGER

Do NOT turn on the power supply before you have connected all the wiring and closed the appliance.

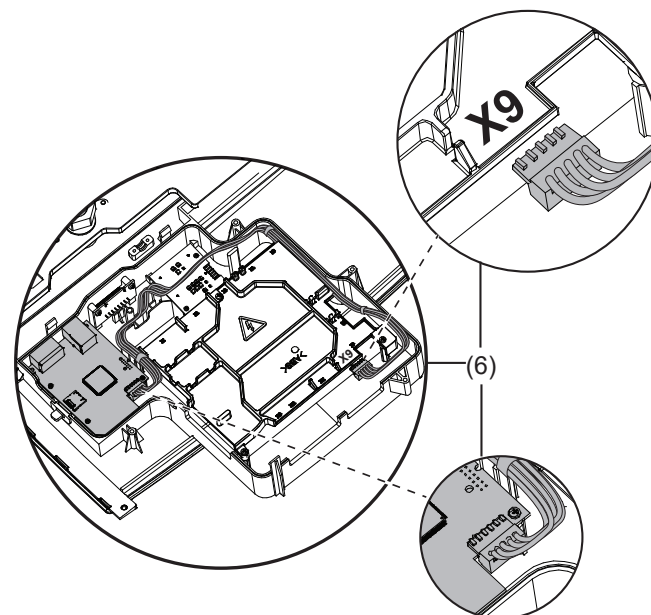
To connect the boiler PCB

Use the cable which is inside the package to connect the PCB and LAN Adapter as shown in chapter "Mounting the LAN Adapter to the boiler"

Connect boiler PCB terminal X9 to LAN adapter terminal.



D2xND028AxA, D2xND035AxA models

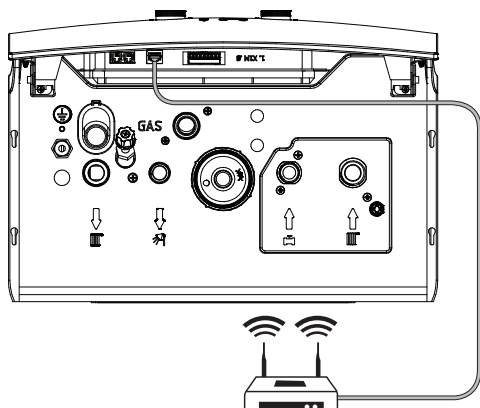


D2TND012A4AA, D2TND018A4AA, D2xND024AxA models

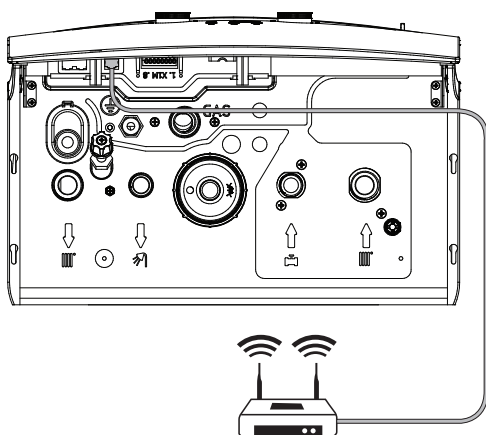
4 Troubleshooting

To connect the router

Connect the LAN Adapter to the router using the ethernet cable.



D2xND028AxA, D2xND035AxA models



D2TND012A4AA, D2TND018A4AA, D2xND024AxA models



NOTICE

To prevent communication problems due to cable breakdown do NOT exceed the minimum bend radius of the Ethernet cable.

5. Configuration



NOTICE

In order to use the app “Daikin Online Control Heating”, Daikin Room Thermostat (DOTROOMTHEAA) must be connected to the boiler.

5.1 Overview

Get the app “Daikin Online Control Heating”.

The adapter and the “device” running the app (smartphone or tablet) should be connected to the same router in order to be able to discover the unit.

The boiler needs to be powered during the configuration.

Follow the steps below;

Power on the unit

The green LED is blinking slowly when the adapter is powered and no error occurs.

The yellow LED shows communication activity to the router and to the unit.

Launch the app

Run the app “Daikin Online Control Heating”.

Agree with the terms of use

When launching the app for the first time, the terms of use needs to be accepted. After this, the app can be used. Accept is enabled when reaching the bottom of the page.

The app discovers the unit

In case the adapter firmware isn't up to date, the unit is shown with next to it the download button.

If the adapter firmware is up to date, then no adapter upgrade is required and the “space heating” and “DHW” units are shown.

Update adapter firmware

Tap the “Update” to start the update process. When the app finalizes the update the next screen with the current firmware version appears. It will take some time before the adapter finalized the firmware update + reboot process.

Expected unit overview

The “Home screen” is displayed, listing up the available units.

Remarks:

- The overview below depends on the boiler type. E.g. for a boiler without DHW unit, only the space heating unit will be visible.
- If not only a boiler but also e.g. an Altherma heat device is connected in the same local network (same router), then the app will also display the Altherma related units.
- In case of more than 1 boiler connected to the same network, all boiler units will be visible.

Update adapter date / time

1. Start the app and go to the Home screen
2. Tap on settings (top-right of screen), the LAN adapter time and date are displayed
3. Tap on “Time”, this will bring up a dialog
4. Confirm the update by tapping “Yes”.

5.2 Updating firmware

You can update the LAN adapter firmware using the Daikin Online Controller Heating App.

When the app is opened, In case the adapter firmware isn't up to date, the unit is shown with next to it the download button.

Tap the "Update" to start the update process. When the app finalized the update the next screen with the current firmware version appears. It will take some time before the adapter finalized the firmware update + reboot process.

5.3 Factory reset

1. Open unit control app run the app Daikin Online Control Heating.
2. Tap on settings
3. Tap on "Factory reset"
4. Confirm the update request by tapping OK

After successful reset, the adapter reboots.

5.4 Removal of LAN adapter

The adapter is powered by the boiler control, so it's important to follow the next steps in order to avoid damage:

1. Put the boiler in standby mode
2. Power off the boiler
3. Open the PCB box to reach the LAN adapter as explained in this manual.
4. Remove the LAN adapter. Also remove the cable that connects LAN adapter and the boiler PCB.

6. Troubleshooting

6.1 LED indication

2 status LED's are available and positioned next to the LAN connector.

	Green LED	Yellow LED
Normal operation	Pulse every 2 seconds	-
LAN communication	-	Lights up when communication is active
Adapter error	Fast blinking	Fast blinking
Upgrade busy	Slow blinking	Slow blinking

6.2 Router

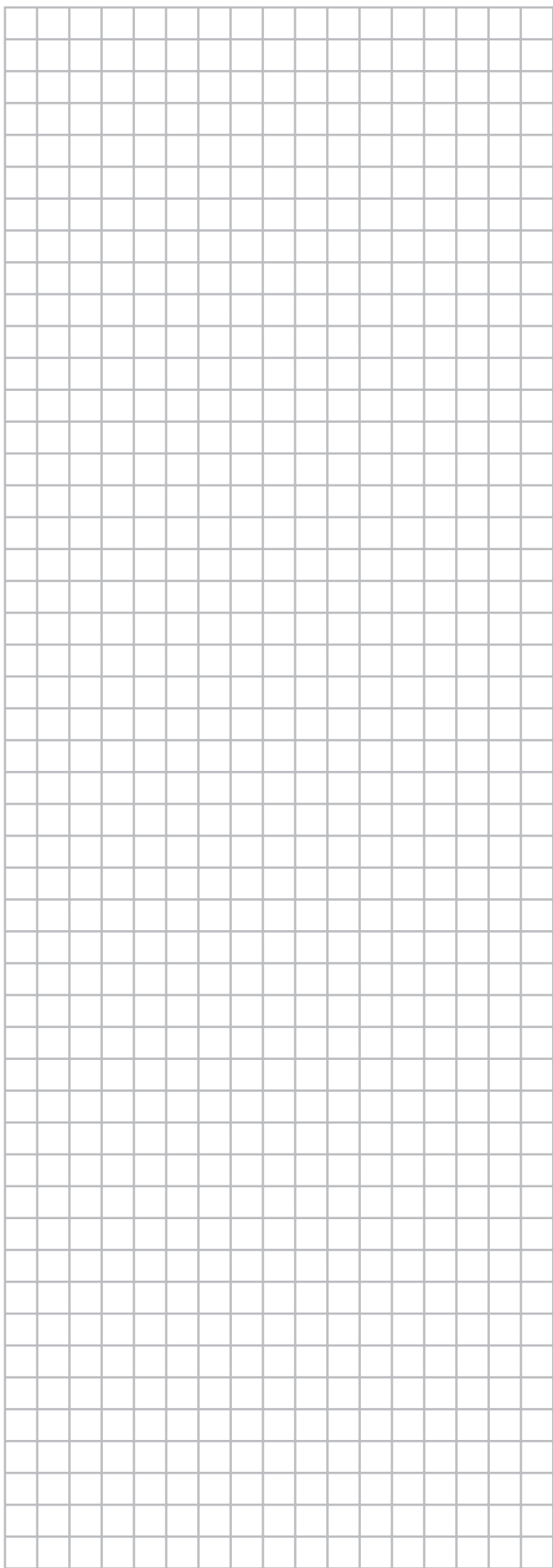
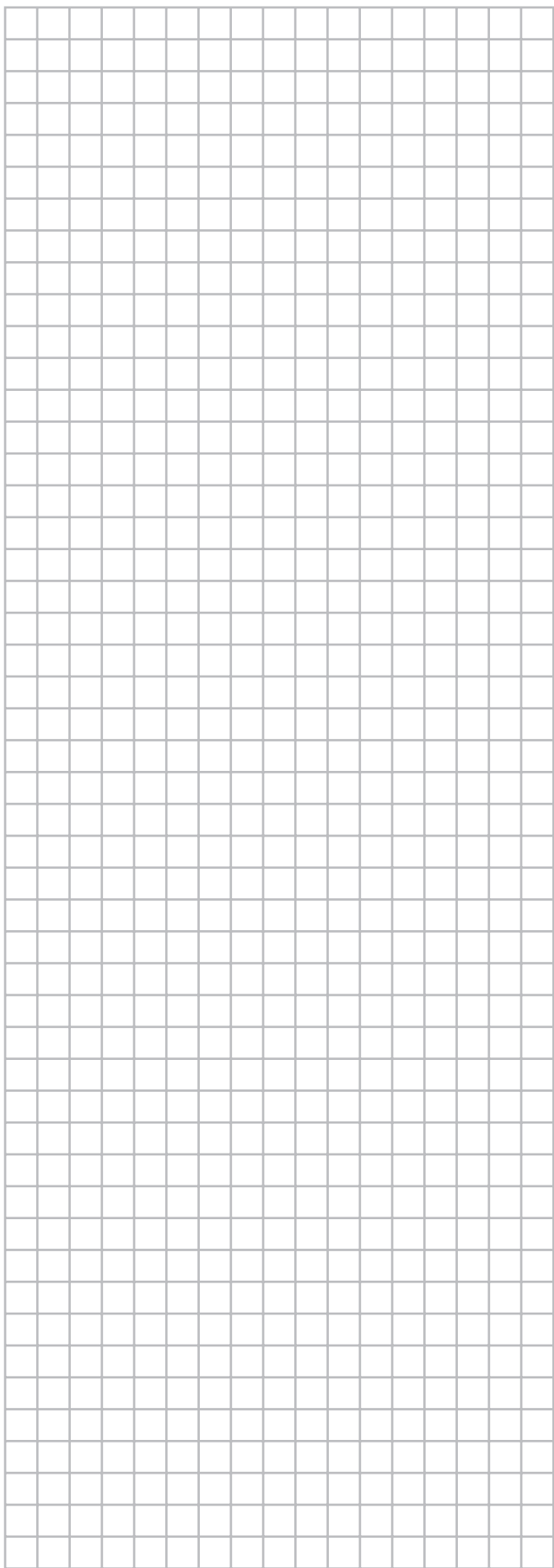
In case of connection problems, the router can give information about the devices connected and the corresponding IP addresses.

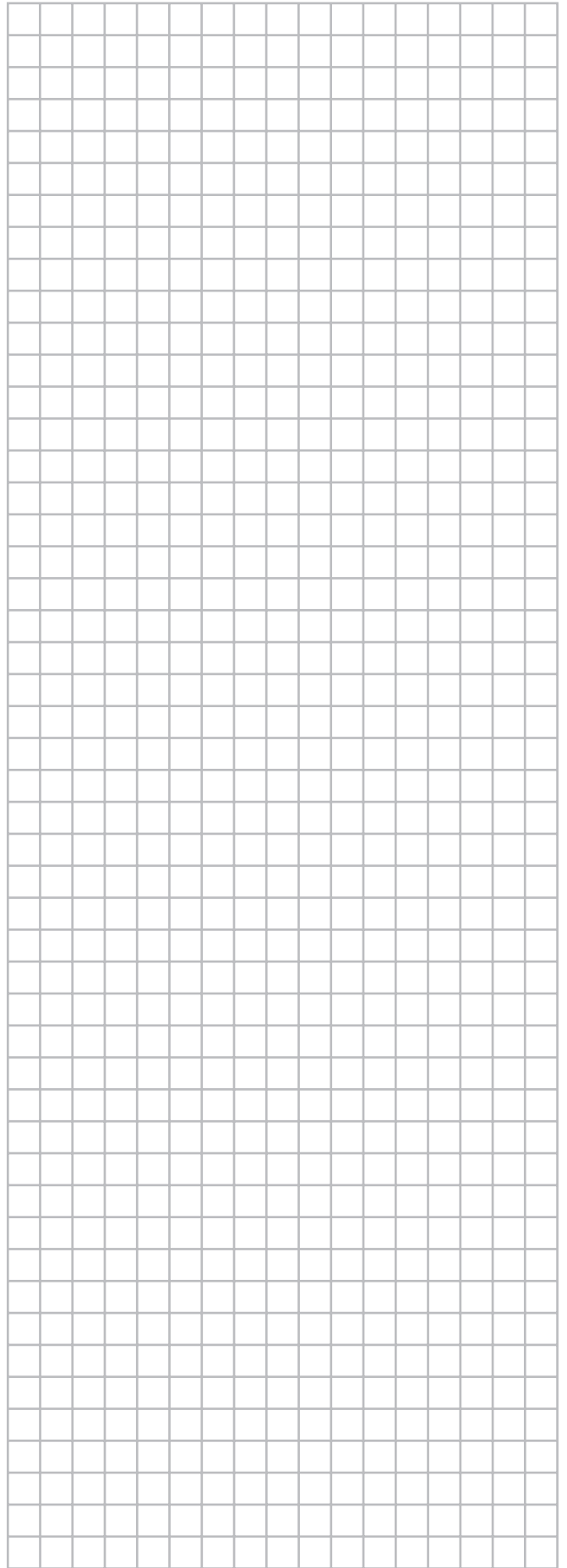
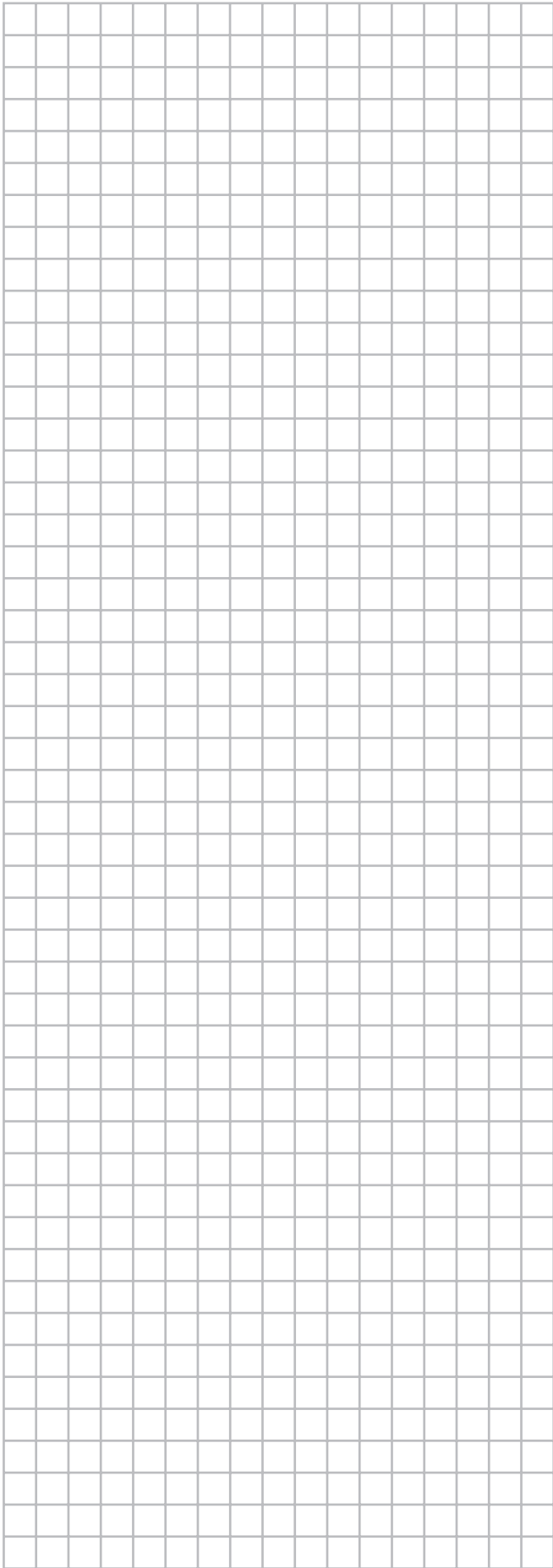
Also check on the router if DHCP is enabled.

6.3 Error codes

The next errors displayed on the app are hampering the proper operation of the adapter.

Error Code	Description
U4-65	Connection with the boiler or the connection between boiler and Remote Control is lost.
H9-01	Connection with the outdoor sensor is lost.





DAIKIN ISITMA VE SOĞUTMA SİSTEMLERİ SAN.TİC. A.Ş.
Küçükbakkalköy Mah. Kayışdağı Cad. No: 1 Kat: 21-22 34750 Ataşehir
İSTANBUL / TÜRKİYE
Tel: 0216 453 27 00
Faks: 0216 671 06 00
Çağrı Merkezi: 444 999 0
Web: www.daikin.com.tr

DAIKIN EUROPE N.V.

Zandvoordestraat 300, B-8400 Oostende, Belgium

Copyright 2018 Daikin

ESIE 18-07 / 2018.07